

## LASER SCAN DETECTOR RLS-3060L

### Setting high standards



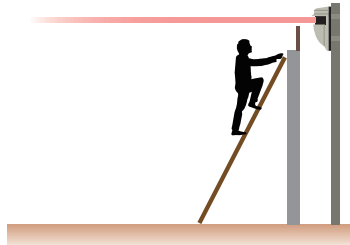
REDSCAN offers real intelligent laser scan analytics to detect individuals, objects and vehicles and trigger video systems. It provides highly reliable detection performance regardless of the lighting conditions or camera performance.

### New feature

#### Fence/wall top protection

The REDSCAN will detect intruders climbing over a fence or a wall by creating a detection area above it.

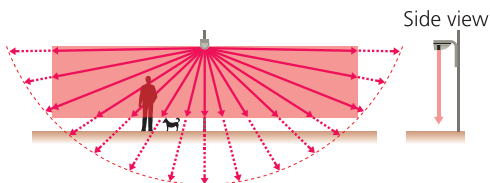
Side view



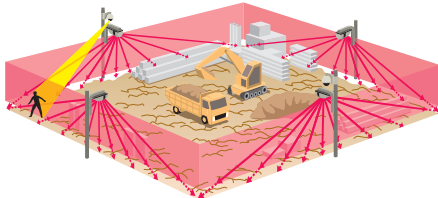
### Standard features

- Detection range : 30m (100ft.) radius, max. 190 degrees.
- Selectable horizontal & vertical detection area
- Flexible and easy set-up for detection area
- 4 independently adjustable detection areas and 4 linked outputs for PTZ camera control
- Analog (dry-contact) and IP connection

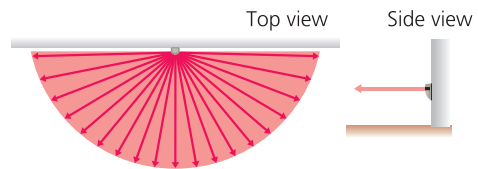
#### Image of vertical detection area



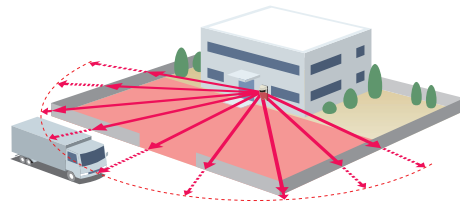
Vertical detection area example



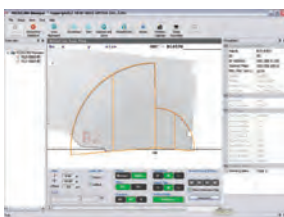
#### Image of horizontal detection area



Horizontal detection area example



#### REDSCAN Manager



Users can set the scan area through the PC and easily adjust the detection area and configurations with REDSCAN Manager software.

REDSCAN



IP connection



Note PC